

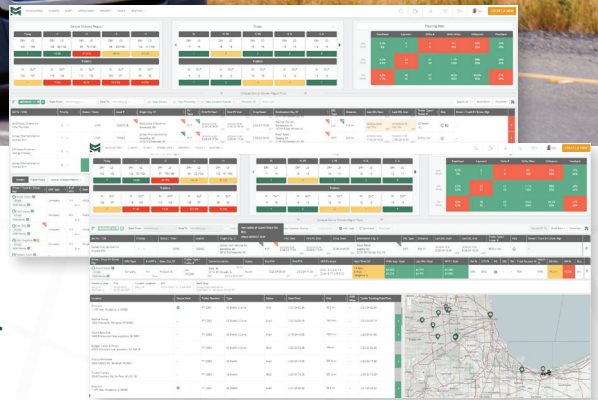
# Magnus Platform: Solving Tomorrow's Load Planning Challenges Today



## Technology-enabled visibility for data-driven planning

Truckload planning can be chaotic and unpredictable. The Magnus Platform offers a solution that brings clarity and foresight to this process for maximizing efficiency and bottom-line results.

Inevitably, you have more freight than capacity, and vice-versa, in key markets on any given day. The Magnus Platform eliminates network blind spots up to 5 days in advance so that load planners can make profitable decisions proactively.



## Key Features of the Magnus Platform

- **Forward visibility.** Gain insights into future loads and capacity fluctuations up to 5 days in advance. Empower planners to make informed decisions ahead of time.
- **Comprehensive Metrics.** Access balanced Key Performance Indicators (KPIs) on a single screen, including market bookings, driver utilization, revenue per truck, and more.
- **Customizable Views.** Tailor the platform to your needs with sorting, filtering, and grouping options, ensuring efficient workflow and personalized insights.
- **Accurate Forecasting.** Predict over and undersold markets precisely to optimize revenue generation and resource allocation.
- **Exception Management.** Identify problem areas immediately with visual cues and warnings, enabling swift resolution of issues.

---

“According to research from Uber Freight, an estimated **35% of all miles driven by trucking companies are empty**. Using an average of 2,700 weekly miles per truck **equates to \$1,890 in empty costs each week, or nearly \$100,000 yearly.**”

---

## Enhanced Visibility

The Magnus Platform empowers planners to resolve issues and optimize operations by offering best-in-class network visibility, dynamic maps, balance projections, and accurate driver ETAs.

## Benefits for Load Planners

- Collaborate with customer service and operations to keep freight moving to fulfill commitments.
- Optimize load assignments to improve driver utilization and predictability, enhancing satisfaction and efficiency.
- Provide transparency to drivers and increase their earnings by pre-planning (stacking) load assignments.
- Intuitive load planning and visualization tools give less experienced planners added context to make informed decisions.

## Benefits for Customer Service and Operations

- Transform empty costs into revenue by strategically repositioning resources.
- Avoid service failures by proactively adjusting driver and equipment allocations.
- Expedite load movement from overbooked markets through proactive planning.



## Flexibility and Customization

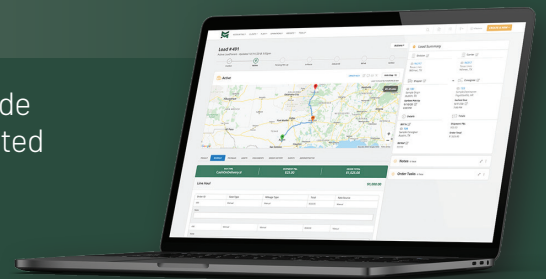
Magnus offers unparalleled flexibility in defining load planning regions, enabling managers to adjust boundaries at any time and optimize resource allocation.

The Magnus Platform transforms load planners into profitability MVPs by shifting network balancing from a cost center to a profit driver. It comes with everything truckload carriers need to proactively respond to customer and capacity demands while improving top-line growth and cost management.

**Experience the Future of Load Planning with the Magnus Platform. Contact Us Today!**

## Get More with Magnus

Magnus Technologies Group offers the most scalable enterprise-grade TMS solution for truckload and brokerage operations, offering unlimited integration and expansion possibilities on a solid foundation of best-in-class cloud computing technologies and services. Whether you dispatch 50 or 5,000 trucks, the Magnus SaaS-based TMS has a full suite of features and integrations to streamline your order-to-cash cycle and maximize business performance and growth.



**Consult with the Magnus TMS technical team and see the system in action by contacting (877) 381-4632 or [sales@magnustech.com](mailto:sales@magnustech.com)**

8601 Ranch Road 2222  
Building 1 Suite 100  
Austin, TX 78730  
(877) 381-4632